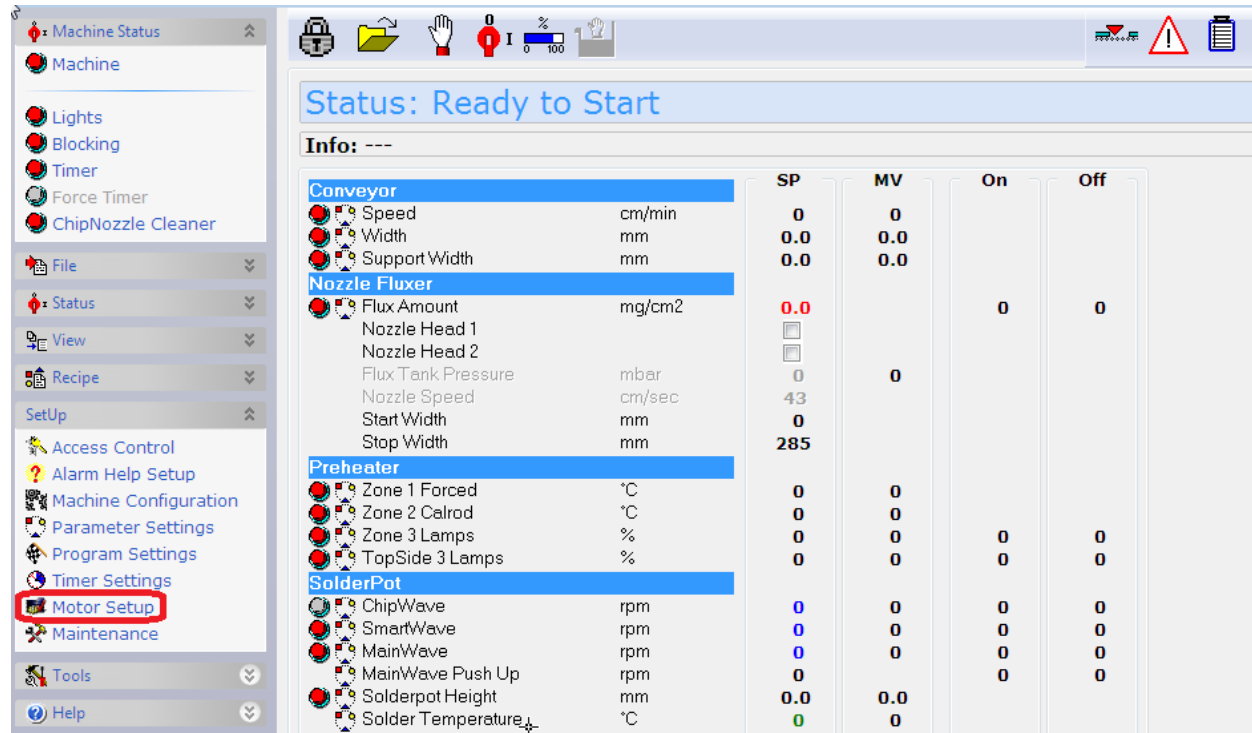


How to program the U30 Fluxer Control Board.

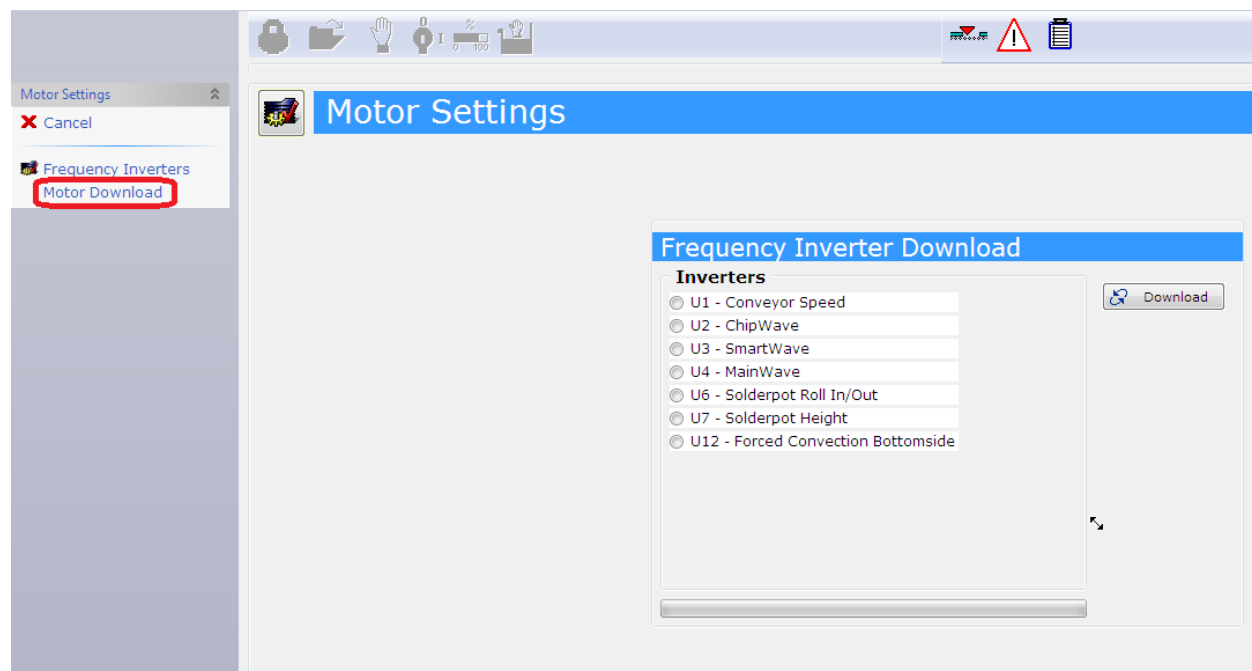
1. Press an Estop on the machine and then click on the speaker icon at the bottom of the screen to silence the alarm.



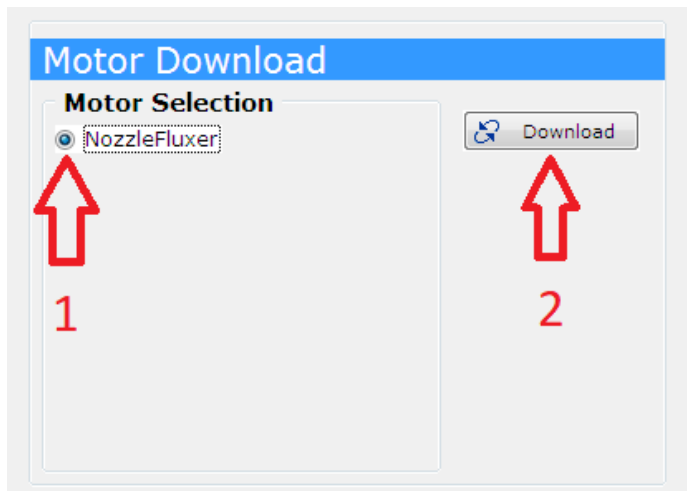
2. Click on Motor Setup under the Setup tab on the left side of the screen as shown below.



3. In the new window that opens (shown below), click on Motor Download on the left side of the screen.



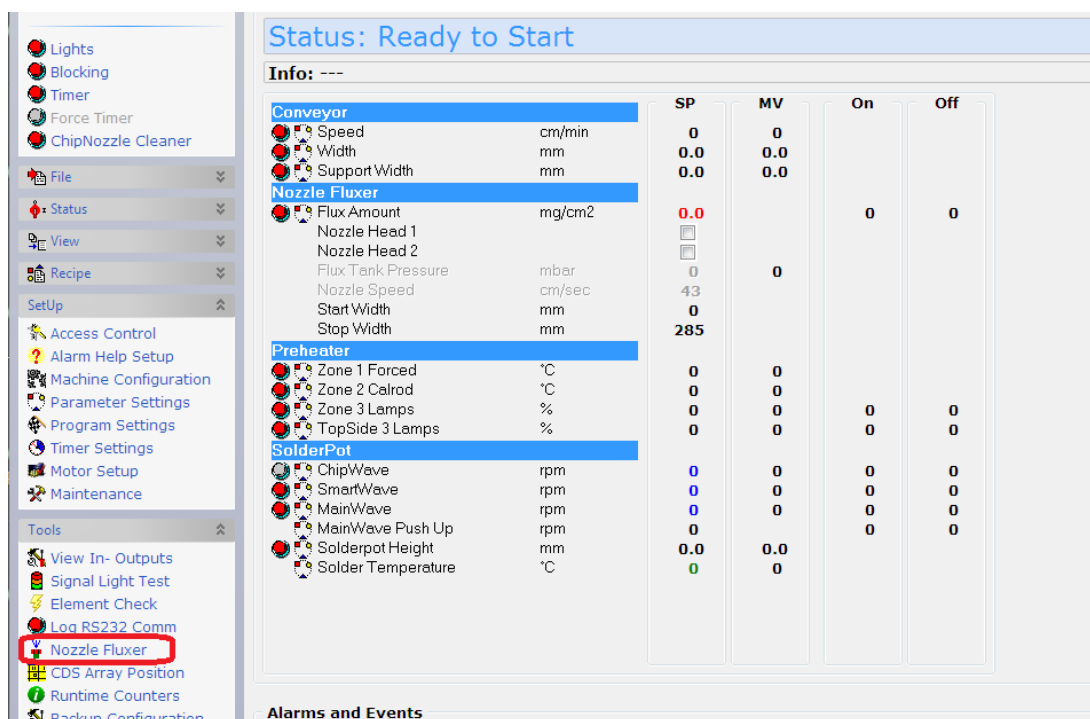
4. In the center of the screen click on the circle to the left of Nozzle Fluxer (1) and then click on Download (2), as shown below.



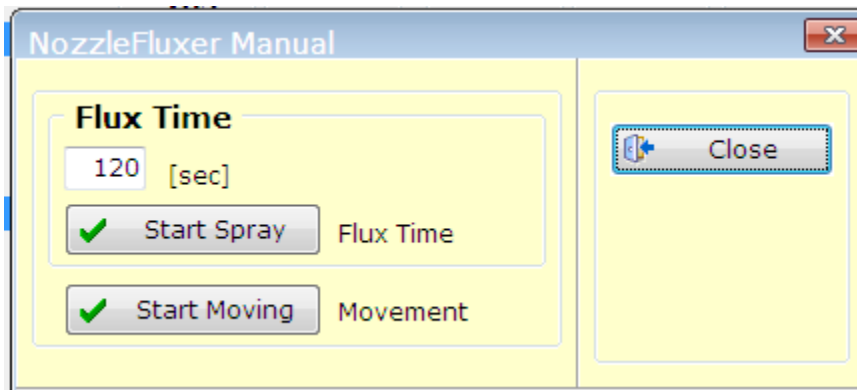
5. A new window will open asking you to choose which file to download. There should be at least 2 files in this folder. Choose the file that has Fluxer in the name. If there are 2 with Fluxer in the name, choose the one with the newer Date (the date is part of the file name). Click on Open to start the download.
6. Once the Download has completed (about a minute), close the window to get back to the main Delta window.
7. At the main screen click on the X at the top right of the screen to close the Delta program.
8. Once the software has closed click on the Start button at the bottom of the screen and then shutdown the computer.
9. Once the computer has turned off, turn off the power to the machine for 1 minute.
10. Restart the computer and test the fluxer.

To test the U30 Fluxer Control Board

1. Click on Nozzle Fluxer under the Tools tab on the left side of the screen



2. Click on Start Moving in the New window and confirm if the fluxer starts moving. Once you have confirmed this, click on Start Spray and confirm if the fluxer is now spraying flux. Once both are confirmed click on Close to get back to the main Delta page.



3. Try to run a recipe.